

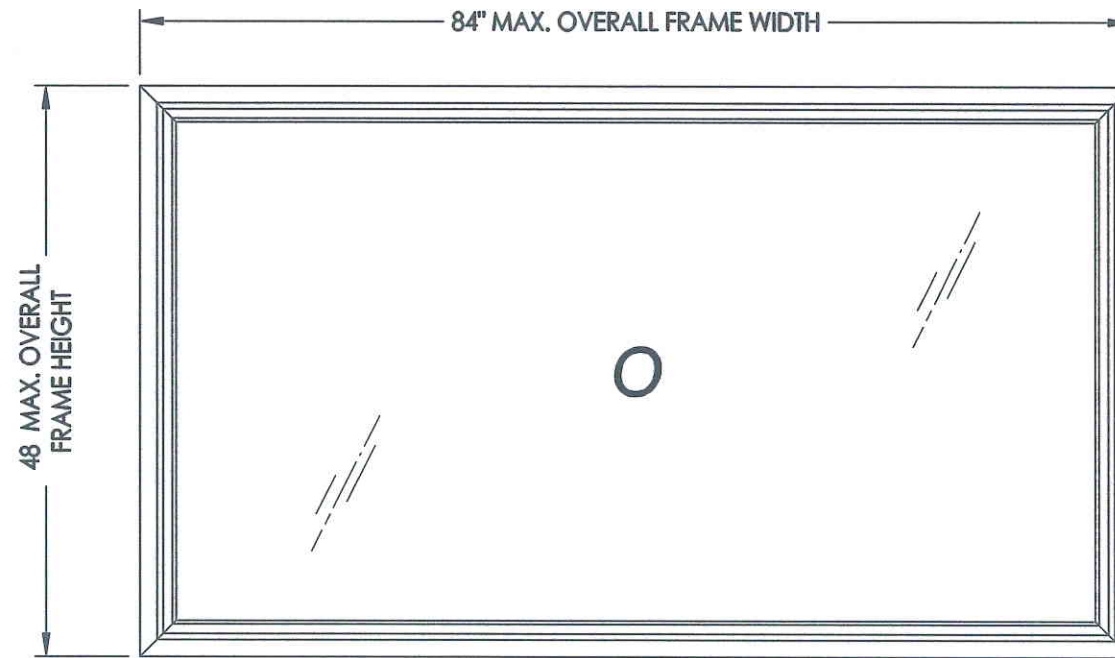


4901 Oak Fair Blvd. Tampa, FL 33610

eVantage Picture Window "NON-IMPACT"

GENERAL NOTES

1. This product has been evaluated and is in compliance with the 2010 Florida Building Code (FBC) structural requirements excluding the "High Velocity Hurricane Zone" (HVHZ).
2. Product anchors shall be as listed and spaced as shown on details. Anchor embedment to base material shall be beyond wall dressing or stucco.
3. When used in areas requiring wind borne debris protection this product is required to be protected with an impact resistant covering that complies with Section 1609.1.2 of the FBC.
4. For 2x stud framing construction, anchoring of these units shall be the same as that shown for 2x buck masonry construction.
5. Site conditions that deviate from the details of this drawing require further engineering analysis by a licensed engineer or registered architect.



84.00" X 48.00" FRAME SHOWN

TABLE OF CONTENTS	
SHEET#	DESCRIPTION
1	Typical elevations, design pressures & general notes
2	Vertical & horizontal cross sections
3	Buck & frame anchoring
4	Bill of materials, glazing details and components

OVERALL FRAME DIMENSION	OVERALL DAY LIGHT DIMENSION	GLASS TYPE	DESIGN PRESSURE (PSF)	
			POS.	NEG.
84.00" X 48.00"	78.93" X 42.93"	G1	+50.0	-50.0
74.25" X 75.25"	69.18" X 70.18"	G2	+40.0	-40.0

Documents Prepared By: **RW** BUILDING CONSULTANTS, INC.
 P.O. Box 230 Valrico FL 33595
 Phone No.: 813.659.9197
 Florida Board of Professional Engineers
 Certificate Of Authorization No. 9813
 Lyndon F. Schmidt, P.E. No. 43408

PRODUCT: NewSouth

PART OR ASSEMBLY: TYPICAL ELEVATION, DESIGN PRESSURES & GENERAL NOTES

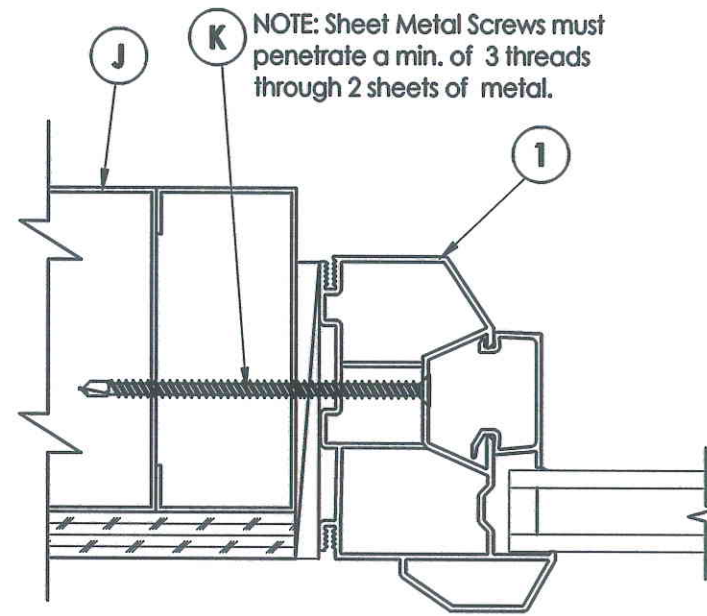
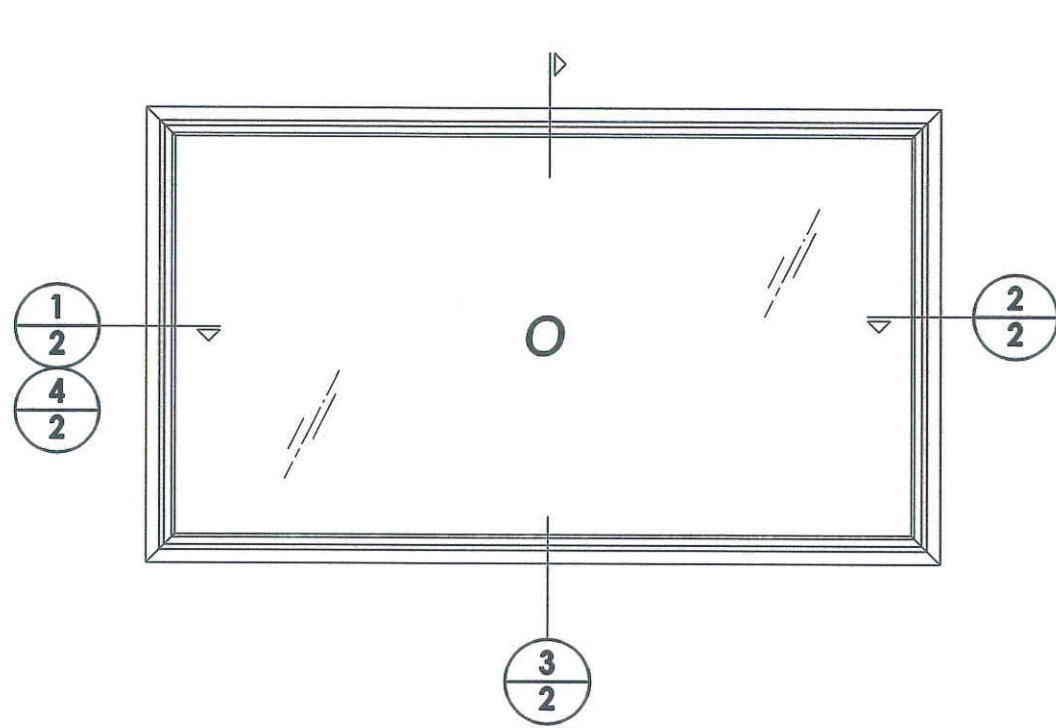
NO.	DATE	BY	REVISIONS

DATE: 12/14/11
 SCALE: N.T.S.
 DWG. BY: JK
 CHK. BY: LFS
 DRAWING NO.: FL-15054.2
 SHEET 1 OF 4

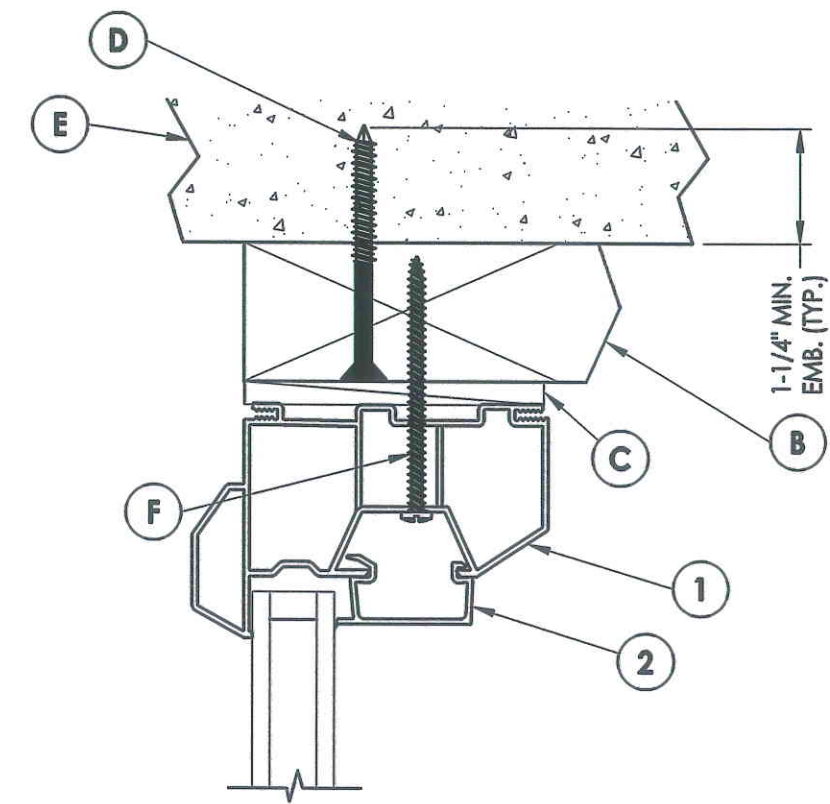
© 2011 R.W. BUILDING CONSULTANTS INC.

R:\Projects\Project Folders\Proj 1001-1700\F-10404D-RWB-Drawings\FL-15054.dwg, FL-15054.2

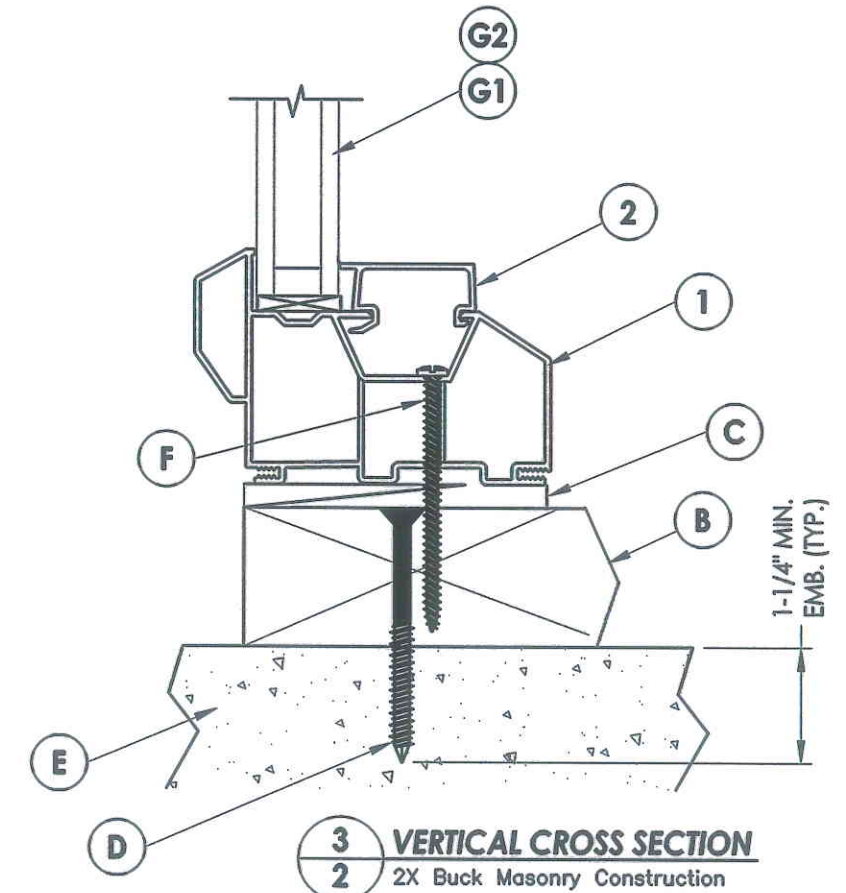
R:\Projects\Project Folders\Proj 1601-1700\PF-1640\B-RWBC Drawings\FL-15054.dwg, 2.2



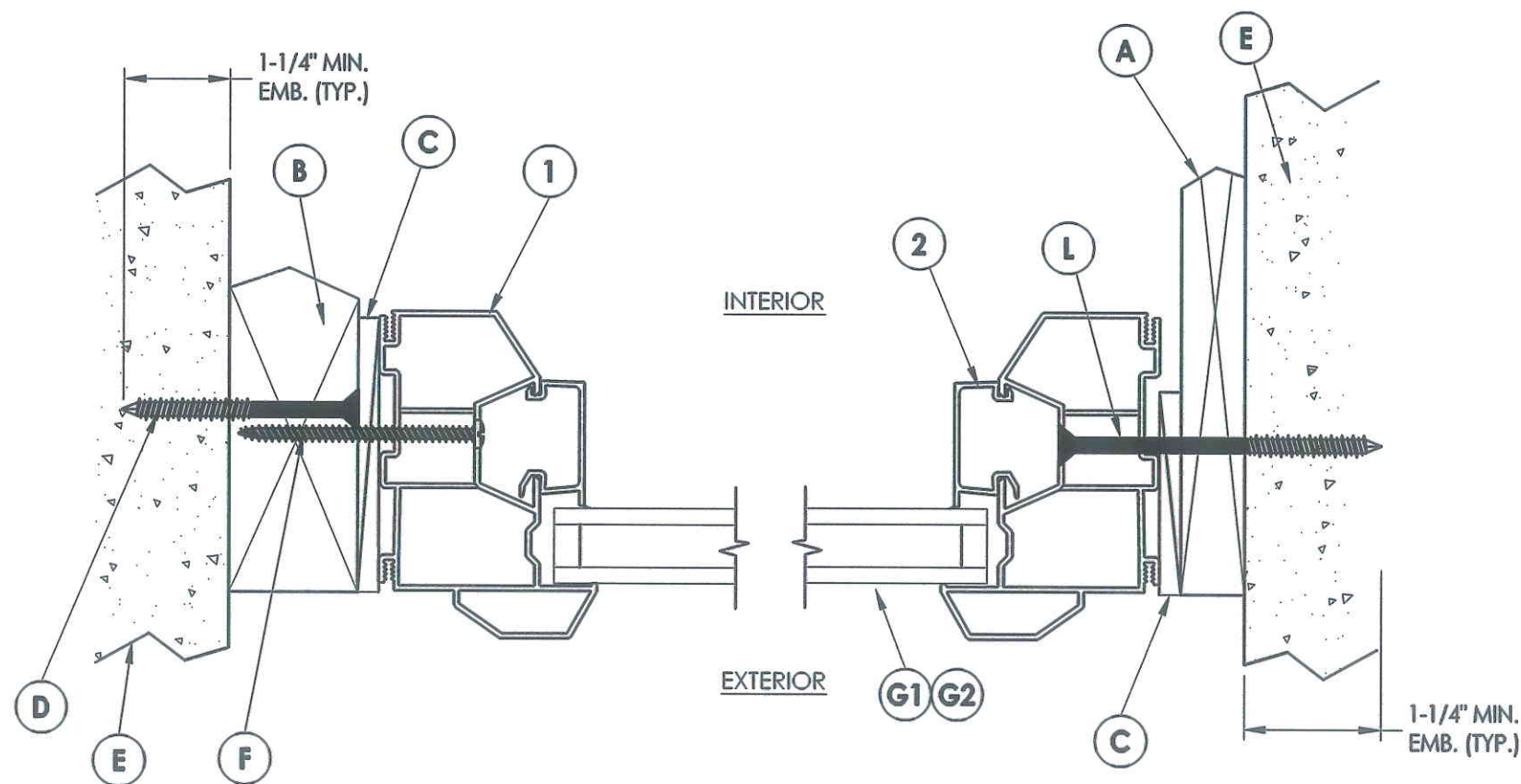
4 HORIZONTAL CROSS SECTION
2 Shown w/ Steel Stud Framing Option



EXTERIOR INTERIOR



3 VERTICAL CROSS SECTION
2 2X Buck Masonry Construction



1 HORIZONTAL CROSS SECTION
2 2X Buck Masonry Construction

2 HORIZONTAL CROSS SECTION
2 Shown w/1X sub-buck

Documents Prepared By:
RW BUILDING CONSULTANTS, INC.
P.O. Box 230 Valrico FL 33595
Phone No.: 813.659.9197
Florida Board of Professional Engineers
Certificate of Authorization No. 9813
Lyndon F. Schmidt, P.E. No. 43409

PRODUCT: NewSouth
PART OR ASSEMBLY: VERTICAL & HORIZONTAL CROSS SECTIONS

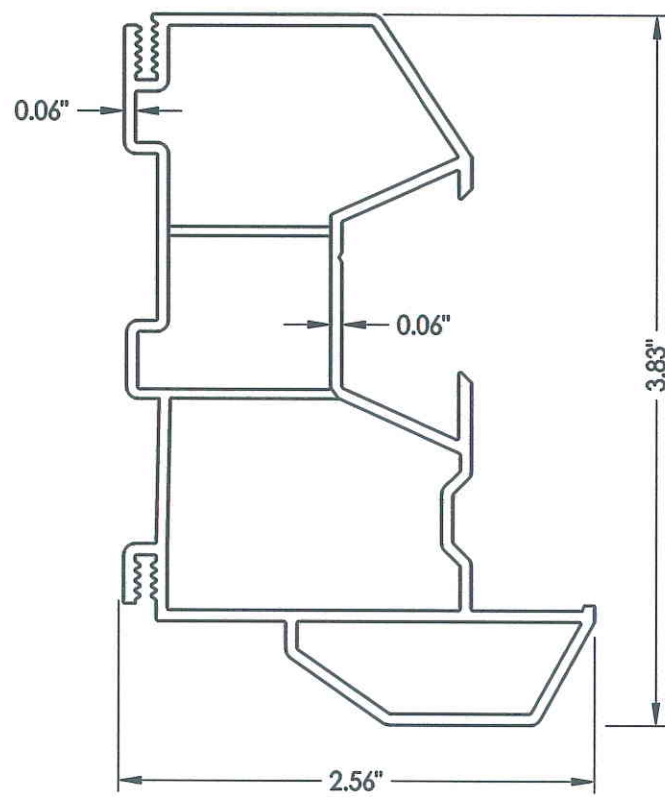
NO.	DATE	BY	REVISIONS

DATE: 12/14/11
SCALE: N.T.S.
DWG. BY: JK
CHK. BY: LFS
DRAWING NO.: FL-15054.2
SHEET 2 OF 4

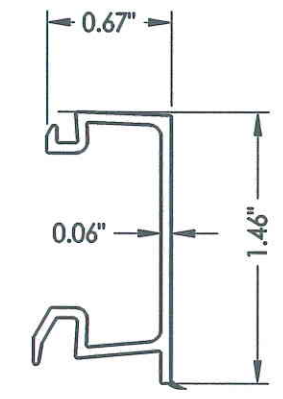
R:\A-Projects\Project-Folders\Proj.1601-1700\PE.1640LD-RMBC-Drawing\EL-15054.dwg, 4.2

BILL OF MATERIALS		
ITEM #	DESCRIPTION	MATERIAL
A	1X BUCK SG >= 0.42	WOOD
B	2X BUCK SG >= 0.42	WOOD
C	1/4" MAX. SHIM SPACE	-
D	1/4" X 2-3/4" PFH ELCO OR ITW CONCRETE SCREW	STEEL
E	MASONRY - 3,192 PSI MIN. CONCRETE CONFORMING TO ACI 301 OR HOLLOW BLOCK CONFORMING TO ASTM C90	CONCRETE
F	#10 X 2-3/4" PPH SMS	STEEL
J	STEEL STUD Min. Thk .033" (ASTM A653 GRADE 33 Fy=33 ksi min., Fu=45 ksi min.)	STEEL
K	#10 PPH SELF-DRILLING SMS	STEEL
L	1/4" X 3-3/4" PFH ITW CONCRETE SCREW	STEEL
1	EXTRUDED VINYL FRAME *	RIGID PVC
2	EXTRUDED VINYL GLAZING BEAD *	RIGID PVC
3	GLASS SETTING BLOCK	-
4	GLAZING SPACER	-
5	GLAZING SEALANT	SILICONE

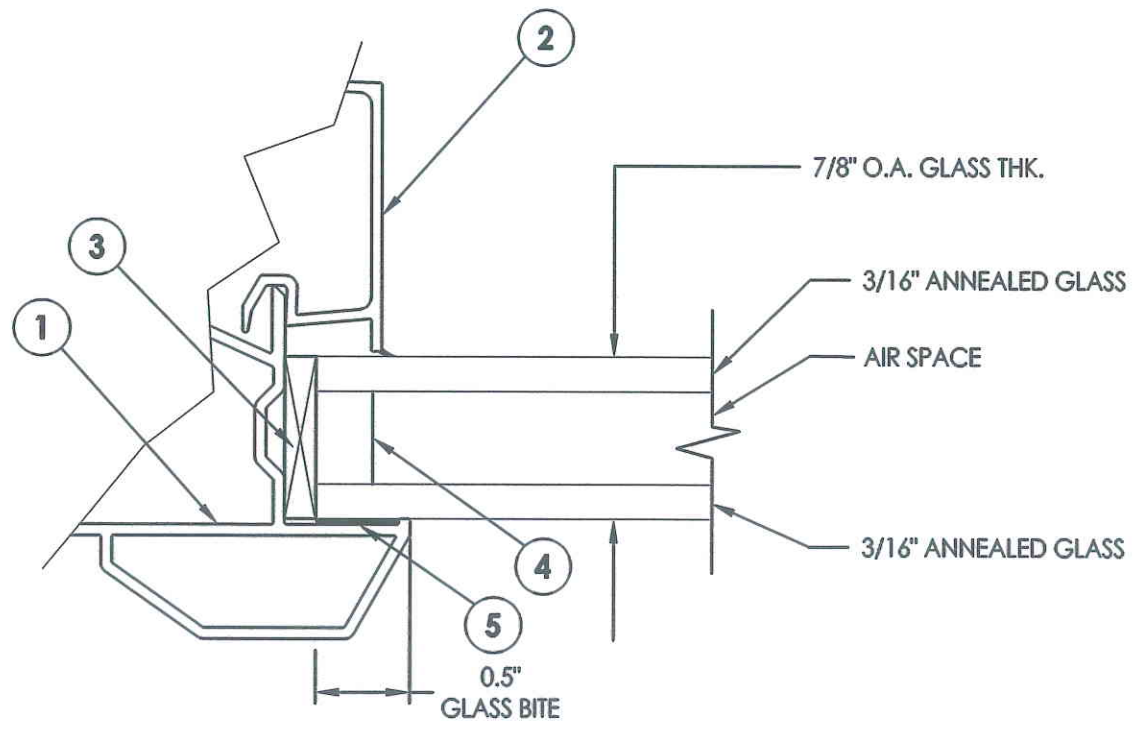
* THE APPROVED WHITE RIGID PVC EXTERIOR EXTRUSIONS FOR WINDOWS ARE TO BE PRODUCED BY EXTRUDERS LICENSEES IN "AAMA CERTIFICATION PROGRAMS FOR RIGID PVC EXTRUSIONS".



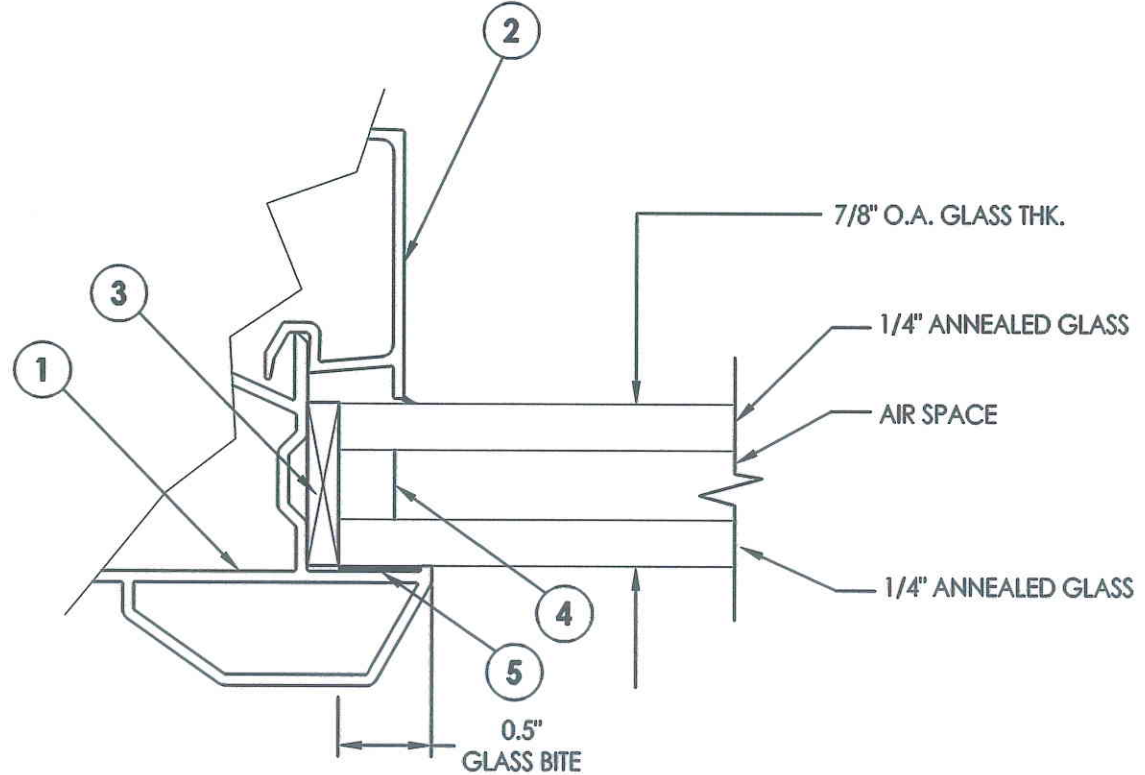
1 FRAME
411



2 GLAZING BEAD
799



G1 GLAZING DETAIL



G2 GLAZING DETAIL

Documents Prepared By:
RW BUILDING CONSULTANTS, INC.
 P.O. Box 230 Valrico FL, 33595
 Phone No.: 813.659.9197
 Florida Board of Professional Engineers
 Certificate of Authorization No. 9813
LFS 12.22.11
 Lyndon F. Schmidt, P.E. No. 43409

PRODUCT: NewSouth

PART OR ASSEMBLY: BILL OF MATERIALS, GLAZING DETAILS & COMPONENTS

NO.	DATE	BY	REVISIONS

DATE: 12/14/11
 SCALE: N.T.S.
 DWG. BY: JK
 CHK. BY: LFS
 DRAWING NO.: FL-15054.2
 SHEET 4 OF 4

© 2011 R.W. BUILDING CONSULTANTS INC.