



4901 Oak Fair Blvd., Tampa, FL 33610

iVantage 9000 Vinyl Horizontal Sliding Window w/ Nailing Fin "IMPACT"

GENERAL NOTES

1. This product anchoring drawing has been evaluated and is in compliance with the 2010 Florida Building Code (FBC) including the "High Velocity Hurricane Zone" (HVHZ). See the Certification Agency Certificate for sizes, specifications & ratings.
2. Product anchors shall be as listed and spaced as shown on details. Anchor embedment to base material shall be beyond wall dressing or stucco.
3. When used in the "HVHZ", this product complies with Section 1626 of the Florida Building Code and does not require an impact resistant covering.
4. Site conditions that deviate from the details of this drawing require further engineering analysis by a licensed engineer or registered architect.

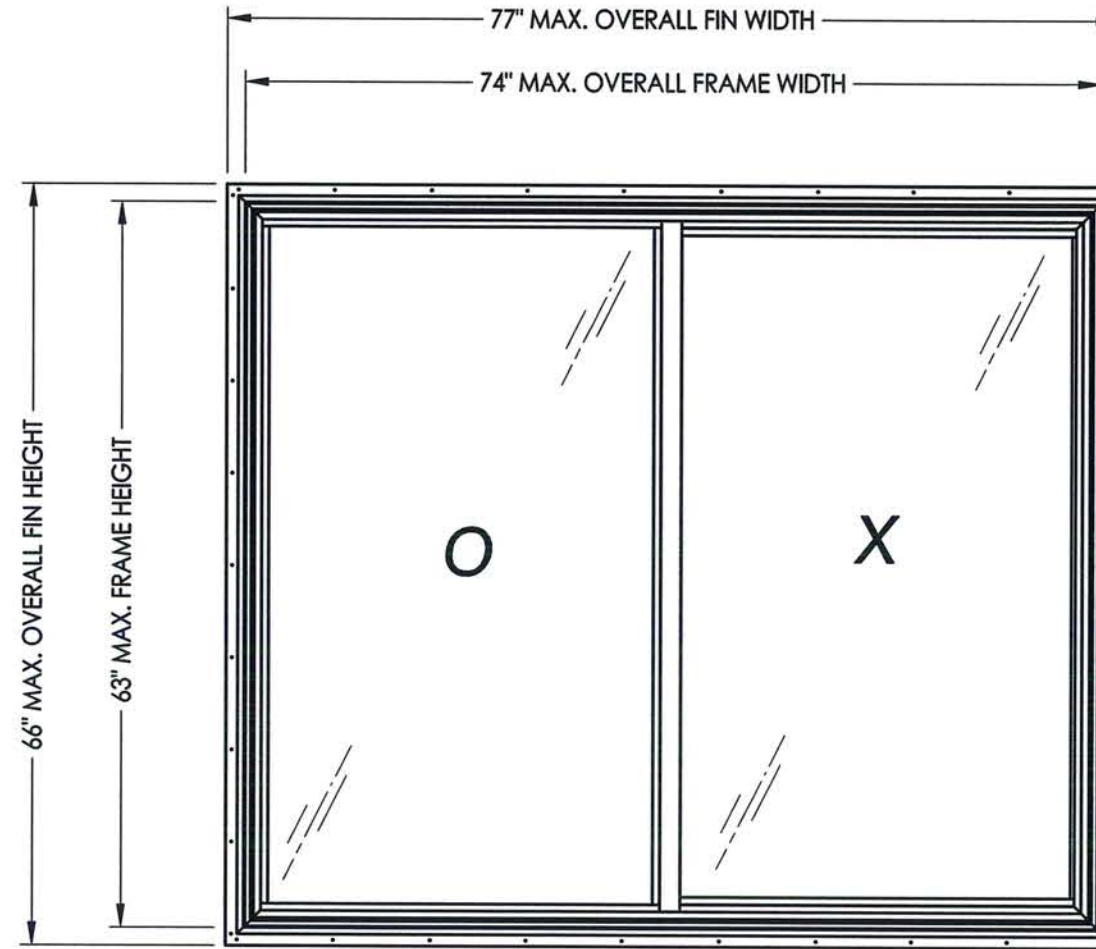


TABLE OF CONTENTS	
SHEET#	DESCRIPTION
1	Typical elevations, design pressures & general notes
2	Vertical & horizontal cross sections
3	Vertical & horizontal cross sections
4	Buck & frame anchoring
5	Components
6	Bill of materials and glazing details

MAX. OVERALL FIN DIMENSION	MAX. OVERALL FRAME DIMENSION	MAX DAY LITE DIMENSION (OPERABLE)	MAX DAY LITE DIMENSION (FIXED)	GLASS TYPE	DESIGN PRESSURE (PSF)	
					POS.	NEG.
77.0" X 66.0"	74.0" X 63.0"	33.5" X 57.31"	33.25" X 58.56"	G1	+50.0	-60.0

Note: This product is not approved for use above 30 feet in the "HVHZ".

Documents Prepared By:
RW BUILDING CONSULTANTS, INC.
 P.O. Box 230 Valrico FL, 33595
 Phone No.: 813.659.9197
 Florida Board of Professional Engineers
 Certificate of Authorization No. 9813
LFS 3-20-14
 Lyndon F. Schmidt, P.E. No. 43409

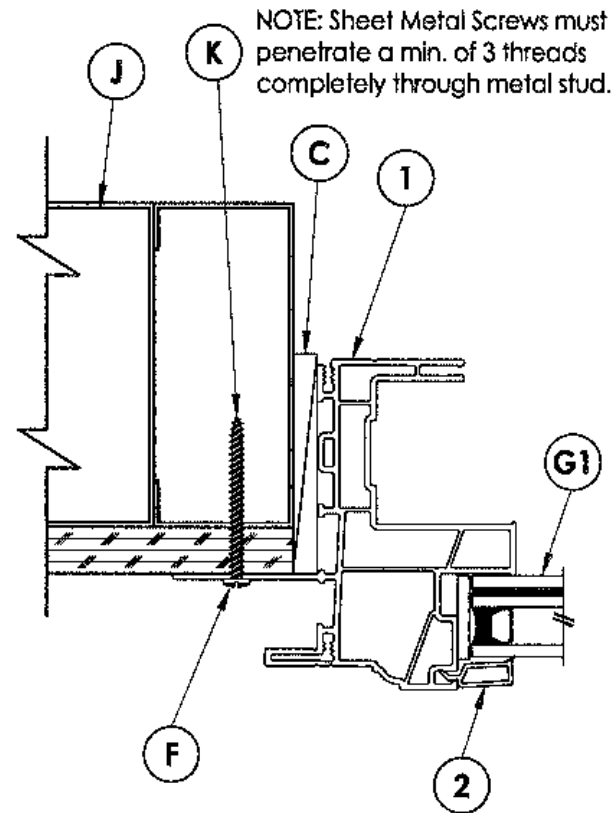
PRODUCT: NewSouth
 PART OR ASSEMBLY:
 TYPICAL ELEVATION, DESIGN
 PRESSURES & GENERAL NOTES

NO.	DATE	BY	REVISIONS

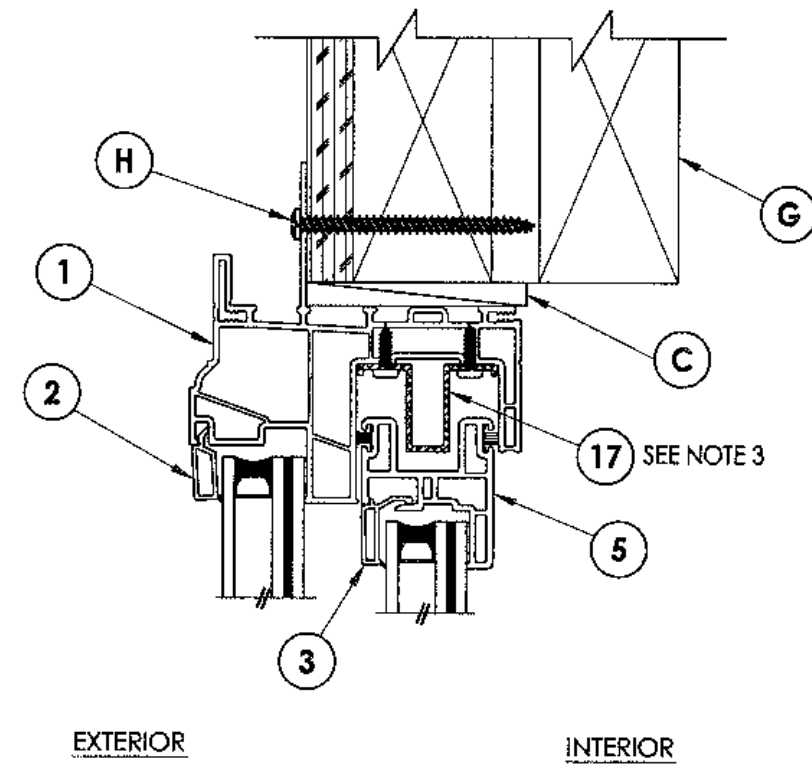
DATE: 2/17/14
 SCALE: N.T.S.
 DWG. BY: JK
 CHK. BY: LFS
 DRAWING NO.:
 FL-16842.1
 SHEET 1 OF 6

Note:

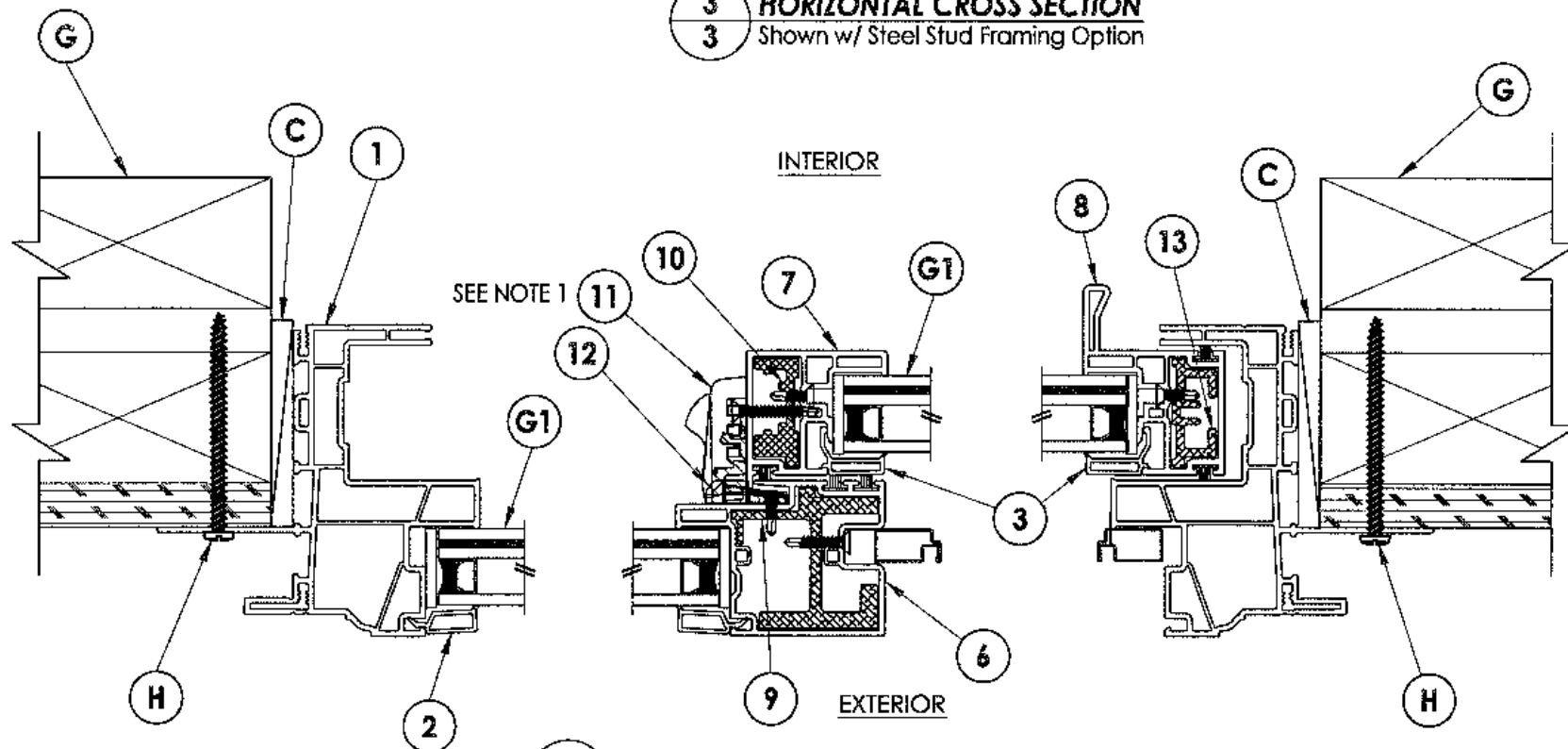
1. Lock and keeper located 7" from each end of lock/meeting stile.
2. Metal roller assembly located 2" from each end of the bottom rail.
3. Anti-lift secured to head with (6) #6 x 1/2" PPH SMS.



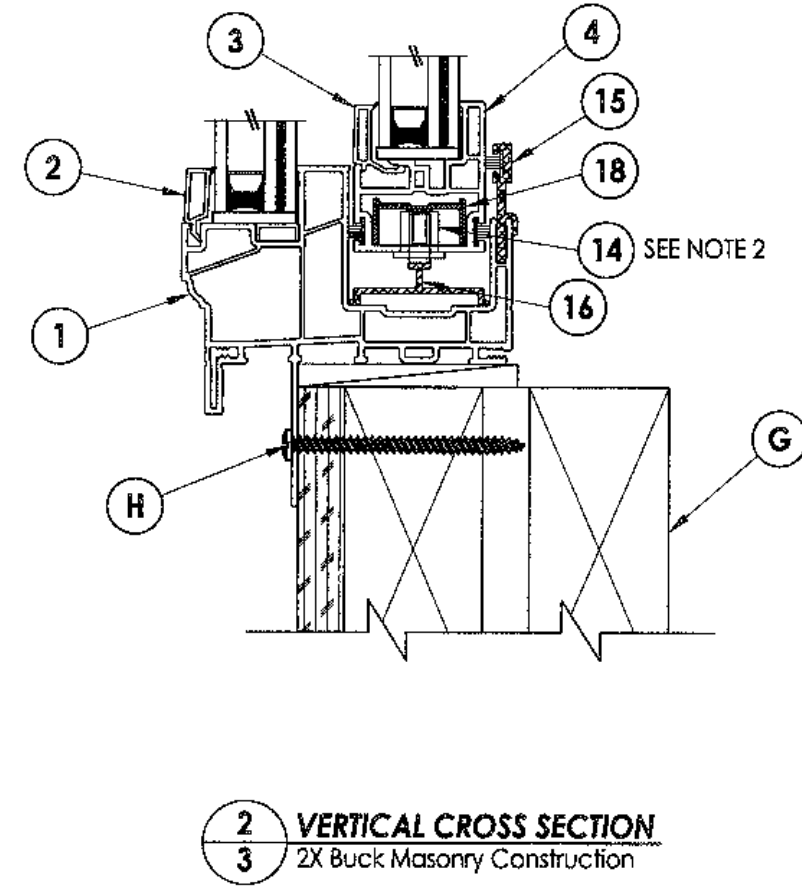
3 HORIZONTAL CROSS SECTION
Shown w/ Steel Stud Framing Option



2 VERTICAL CROSS SECTION
2X Buck Masonry Construction



1 HORIZONTAL CROSS SECTION
2X Buck Masonry Construction



2 VERTICAL CROSS SECTION
2X Buck Masonry Construction

Documents Prepared By:

RW BUILDING CONSULTANTS, INC.
P.O. Box 230 Valrico FL 33595
Phone No.: 813.659.9197
Florida Board of Professional Engineers
Certificate Of Authorization No. 9813
3.2e.14
Lyndon F. Schmidt, P.E. No. 43409

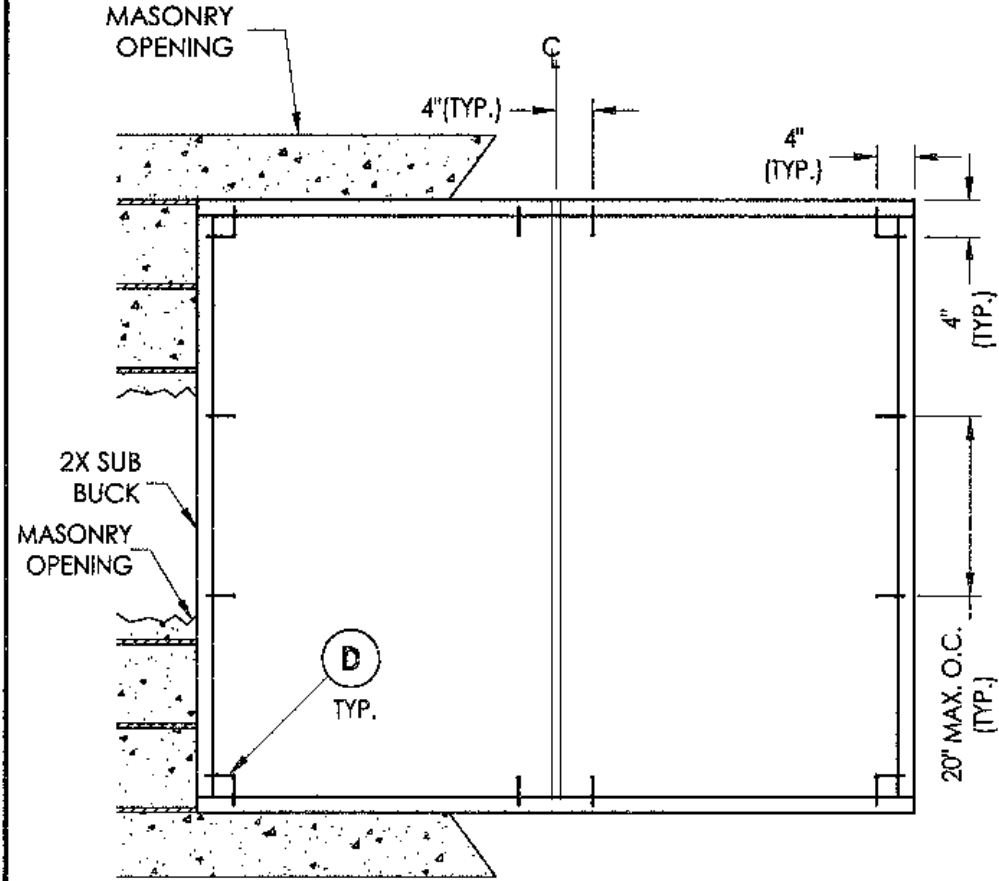
PRODUCT: NewSouth

PART OR ASSEMBLY: VERTICAL & HORIZONTAL CROSS SECTIONS

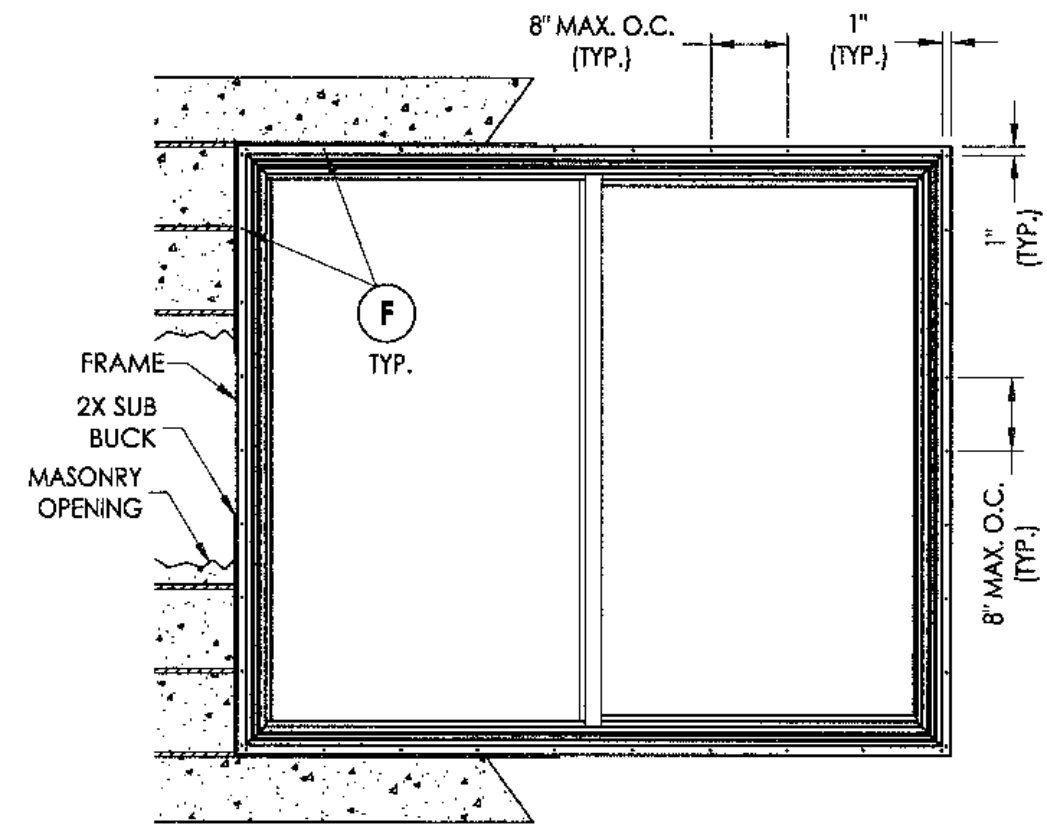
NO.	DATE	BY

DATE: 2/17/14
SCALE: N.T.S.
DWG. BY: JK
CHK. BY: LFS
DRAWING NO.: FL-16842.1
SHEET 3 OF 6

RVA - Projects\Project Folders\Proj 1701 - 1800\PF 1741\D. RWBC Drawings\FL-16842.1-4.dwg, 4-1

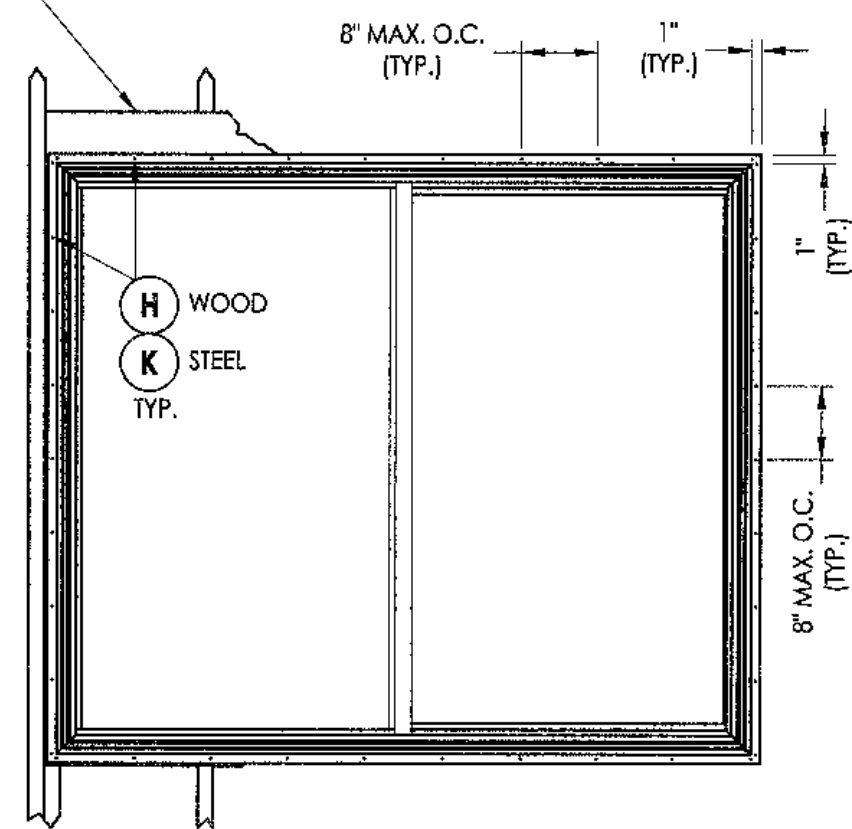


BUCK ANCHORING



FRAME ANCHORING
2X Buck Masonry Construction

2X/STEEL STUD FRAMING TO BE DESIGNED BY THE ENGINEER OR ARCHITECT OF RECORD BASED ON WIND LOADS AND THE CLADDING BEING USED.



FRAME ANCHORING
Stud Construction

CONCRETE ANCHOR NOTES:

1. Concrete anchor locations at the corners may be adjusted to maintain the min. edge distance to mortar joints.
2. Concrete anchor locations noted as "MAX. ON CENTER" must be adjusted to maintain the min. edge distance to mortar joints, additional concrete anchors may be required to ensure the "MAX. ON CENTER" dimension are not exceeded.
3. Concrete anchor table:

ANCHOR TYPE	ANCHOR SIZE	MIN. EMBEDMENT	MIN. CLEARANCE TO MASONRY EDGE	MIN. CLEARANCE TO ADJACENT ANCHOR
ITW TAPCON®	1/4"	1-1/4"	2"	4"
ELCO ULTRACON®	1/4"	1-1/4"	1"	4"

Documents Prepared By: **RW** BUILDING CONSULTANTS, INC.
P.O. Box 230 Valrico FL 33595
Phone No.: 813.659.9197
Florida Board of Professional Engineers
Certificate of Authorization No. 9813
Lyndon F. Schmidt, P.E. No. 43409
3-2-14

PRODUCT: NewSouth
PART OR ASSEMBLY: BUCK & FRAME ANCHORING

NO.	DATE	BY

DATE: 2/17/14
SCALE: N.T.S.
DWG. BY: JK
CHK. BY: LFS
DRAWING NO.: FL-16842.1
SHEET 4 OF 6

© 2014 R.W. BUILDING CONSULTANTS INC.

